

## Outdoor Wifi Wireless Bridge Series

### WB620H WiFi Long range 5km/3.1 miles



**Product Name:**

WB620H WiFi Long range 5km/3.1 miles

**Order Model:**

WB620H

**Application Scenarios:**

Mainly used for long-distance network transmission and monitoring data transmission.

such as between distant buildings like office buildings, warehouses, barns, farms, and garages, wireless bridges can provide efficient network connections, avoiding the costs of laying physical network cables. They can effectively extend network coverage and eliminate signal blind spots.

In video surveillance or security systems, wireless bridges can connect cameras to the main network, enabling real-time monitoring.

**Product Overview:**

**Product Overview:**

WB620H Outdoor Wireless Bridge is a 5 GHz high-powered long-distance 11AC wireless outdoor AP/client bridge, Offering dual-PoE Gigabit ports and a high-gain directional antenna that emits a narrow signal beam, limiting interference and ensuring stable connectivity, high-bandwidth and 1200Mbps speeds over long distances. 16dBi High-Gain Antennas Extend Networks to MAX 3.1 Miles (Point-to-Point), PoE Compliant Ports Offer Flexible Power Options for an IP Camera or AP, 360-Degree, 3-Axis Pivoting Arm Locks for Precision Alignment, Wifi CPE router be used in complicated environment, like elevator monitoring, also weatherproof case against rugged environment Standard with POE power supply, which makes project more simple.

**Feature Description:**

- ◆ Power Indoor/Outdoor CPE with MTK7621 Chipset-Range up to 3.1 miles away with line of sight
- ◆ Can be used to connect remote IP cameras to existing NVR's / DVR's
- ◆ Supports up to 1200Mbps
- ◆ Utilizes the 5.8Ghz Wi-Fi frequency, avoiding the congested 2.4Ghz bandwidth in use on most Wi-Fi today.
- ◆ 16dBi Panel Antenna
- ◆ Supports the following operation modes: Bridge, Access Point, Router and Repeater
- ◆ Supports providing PoE power to a single IP camera attached to CPE
- ◆ Includes 48V PoE power injector which allows for powering CPE from up to 330ft away
- ◆ LEDs provide information about system status and signal strength for alignment in Bridge mode
- ◆ Hardware Reset button
- ◆ Outdoor Rated down to -40°F
- ◆ Supports Pole, Wall or Rack Mounting

**Product list**



2\* Wireless Bridges



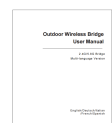
2\* Hose Clamps



2\* 24V POE adapter

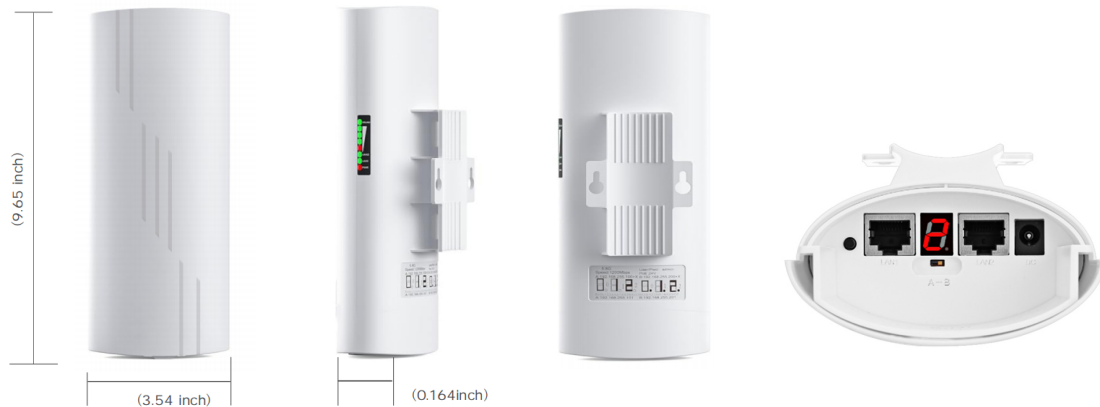


2\* Network Cables



Installation Guide

## Product Dimensions and Interfaces:



## Technical Specifications:

### Parameter/Model

CPU	MTK 7621DDR2 64MByte FLASH 8MByte
5.8GHz: 900Mbps	5.8GHz: 1200Mbps
Antenna	2*16dBi Antennas
Wi-Fi Standards	IEEE802.11a/an/ac
Transfer Method	Direct Sequence Spread Spectrum (DSSS)
Frequency Range	4900~6100MHz
System settings	Supports language settings; supports password modification; supports USB upgrade.
Band width	1200 Mbps
Supporting agreement	CSMA/CA TCP/IP,IPX/SPX,NetBEUI,DHCP,NDIS3,N-DIS4,NDIS5
Management setting	WEP management , Telnet , Serial
Physical Ports	2*10/100/1000Mbps adaptive RJ45 network interface
LED Indicators	Power / WAN / LAN / Wi-Fi Level Signal Strength
Power scheme	Adapter: 24V 1A PoE Power Adapter
Power scheme	≤3W
Installation Methods	Pole Mounting, Wall Mounting or Rack Mounting
Package size	30*30*9cm
Package Weight	1.5KG
Working Environment	-30°C~+55°C(work)
Storage Environment	-40°C~+70°C(storage)